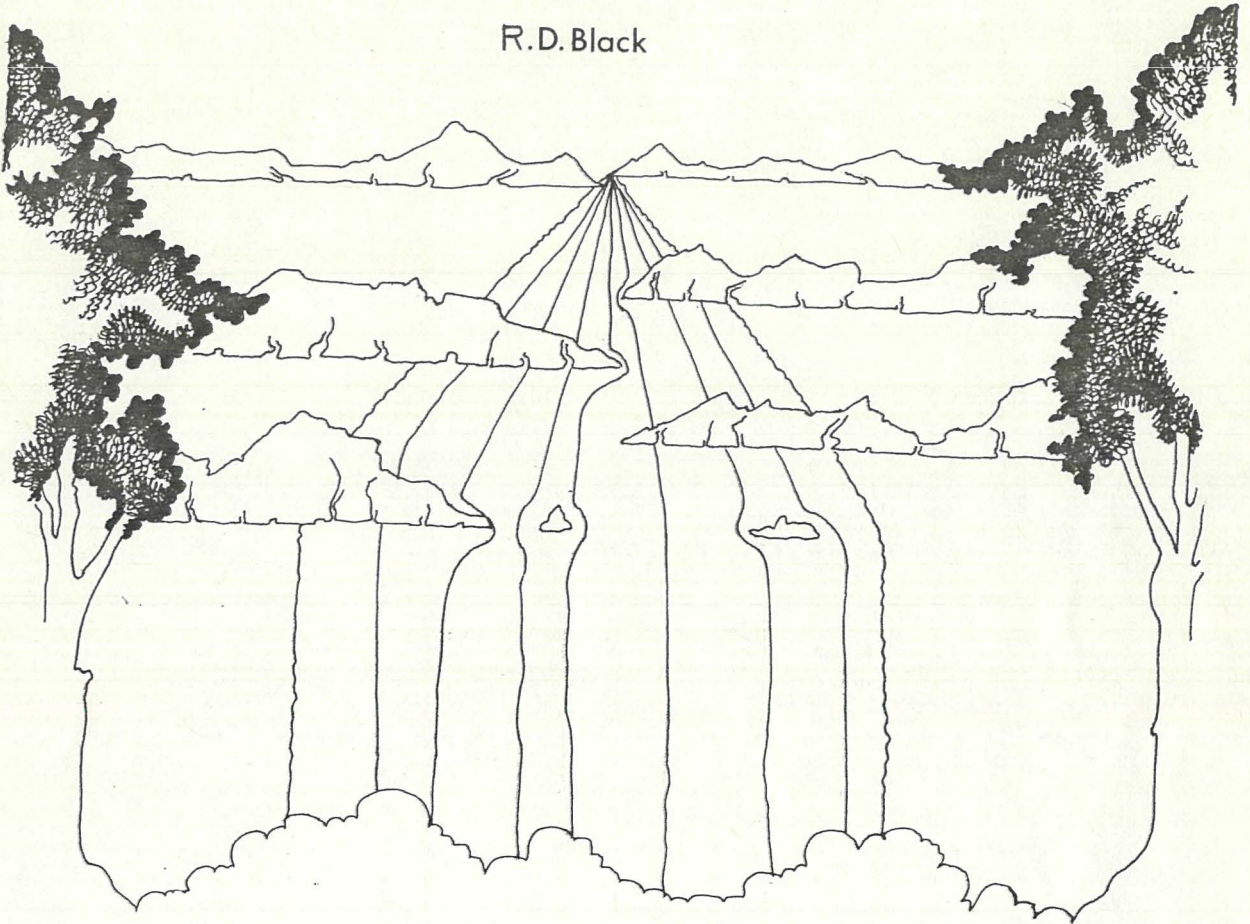


RIVERS OF CHANGE

Early History of the Upper Waipoa and
Mangatu Catchments

1951 -

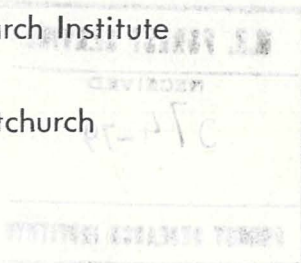
R.D. Black



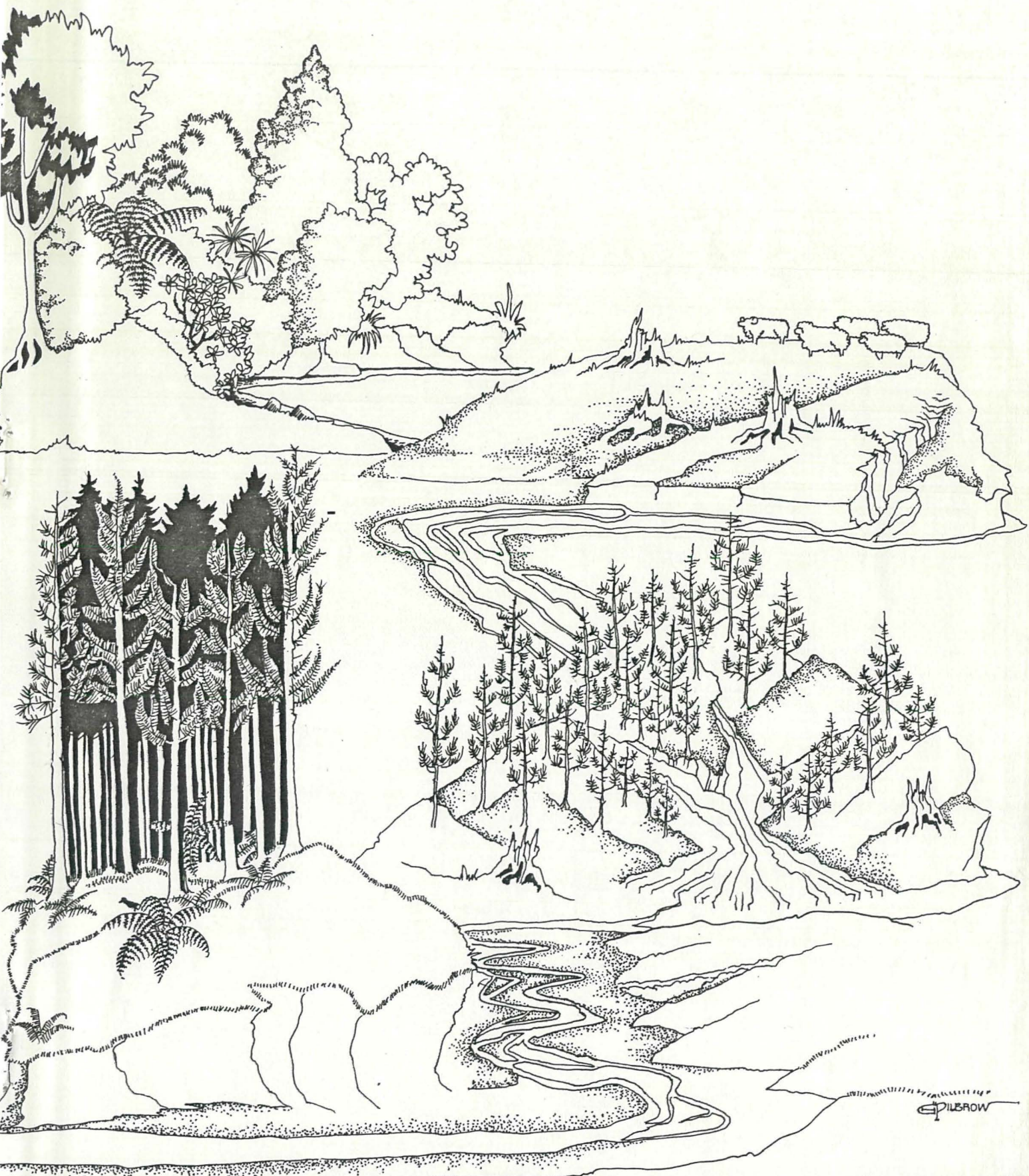
Protection Forestry Division

Forestry Research Institute

Ilam, Christchurch



January 1977



<u>TABLE OF CONTENTS</u>	<u>PAGE</u>
Introduction	1
Acknowledgements	1
I The Background to Maori Land Blocks	4
II Leasehold Subdivision	7
III Land Development in the Mangatu Catchment	11
IV The Effect of the Depression	17
V Freehold Land Subdivision	22
VI Explanation of the Land Acquisition Map	28
Appendix 1. Map of Early Arowhana	30
Appendix 2. Te Kumi Story	31
References	33

LIST OF ILLUSTRATIONS

Figure 1. Location Map	2
Figure 2. Maori Land Blocks	3
Figure 3. Subdivision of Land Blocks	6
Plate 1. Mangatahu Station 1903	9
Plate 2. Dome Station 1903	10
Plate 3. Bush Clearance	13
Plate 4. Iwiroa Whare	14
Plate 5. Dome Station 1910	15
Plate 6. Bush Cattle	16
Plate 7. Arowhana Station 1914	19
Plate 8. Wheturau Woolshed 1906	20
Plate 9. Arowhana Station 1914	21
Plate 10. Waimatau Stream	27
Plate 11. The Kumi paddock	32

INTRODUCTION

This report is the result of research during and after the preparation of the initial report, Gage & Black 1976. Some of the material was summarised in that paper. The purpose of this report however, is to provide a historical background to the area now within S.F. 108, particularly outlining the problems associated with the transition from Maori to European ownership, legal problems and economic depression. Both the Mangatu and Waipaoa Rivers have had a marked effect on the landform in the last 28,000 years and the conversion from a beech-podocarp forest to pasture has initiated a recent cycle of intense geomorphic activity. These changes where possible have been documented with the use of photographs.

ACKNOWLEDGEMENTS

I would like to thank the following people for their invaluable help in preparing this report:

The staff of the Lands and Deeds office, Gisborne, Mr. J.W. Haldane and Sir Robert de Z Hall, Gisborne Museum and Art Centre, for their help in obtaining historical photographs and for permitting the use of unpublished manuscripts. Miss M. Fitzgerald, Mr. H. Fitzgerald, Mr. W. Hegarty, Mr. Jim King, Mr. & Mrs. F.W. Law, Mrs. L. Maclean and Mr. C.K. Spence for their help with background information and for providing permission to reproduce photographs for the report. Finally I would like to thank Mrs. M. Tarr for typing this report and Mrs. W. Bradley for checking the draft copy.

Figure 1

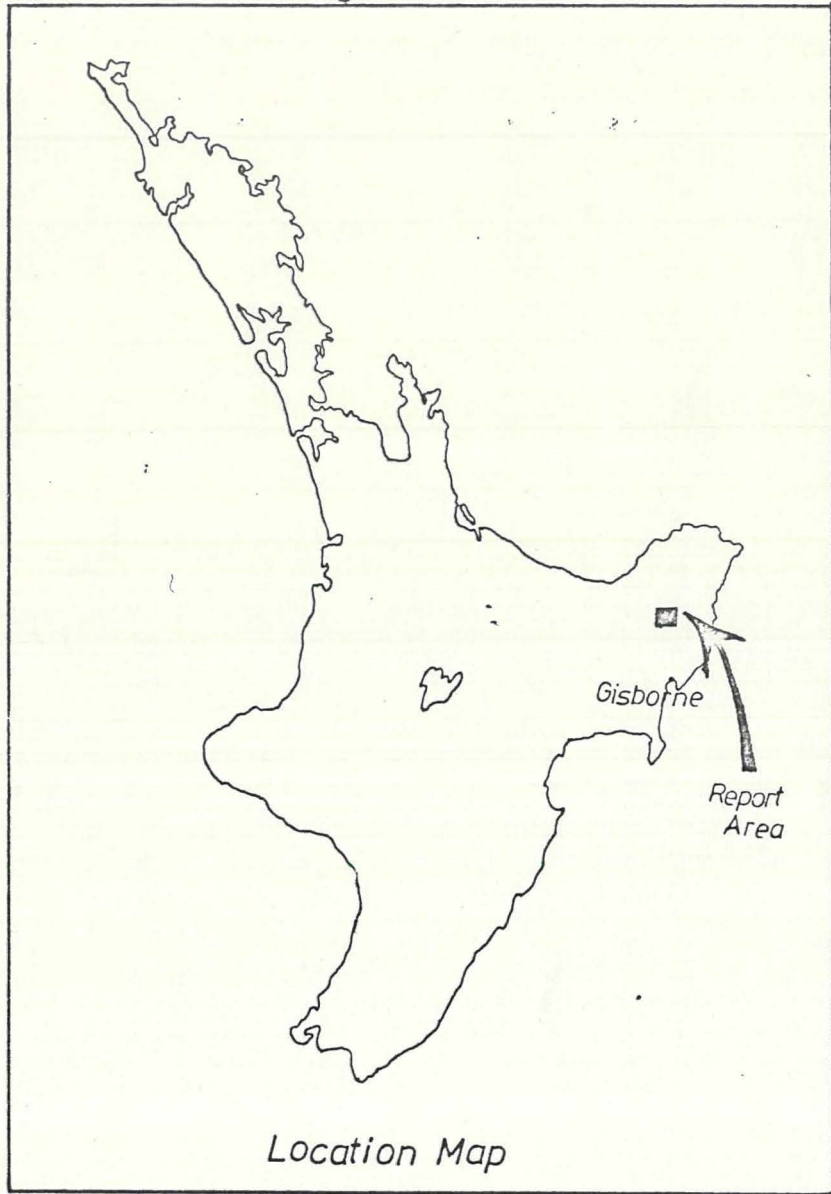
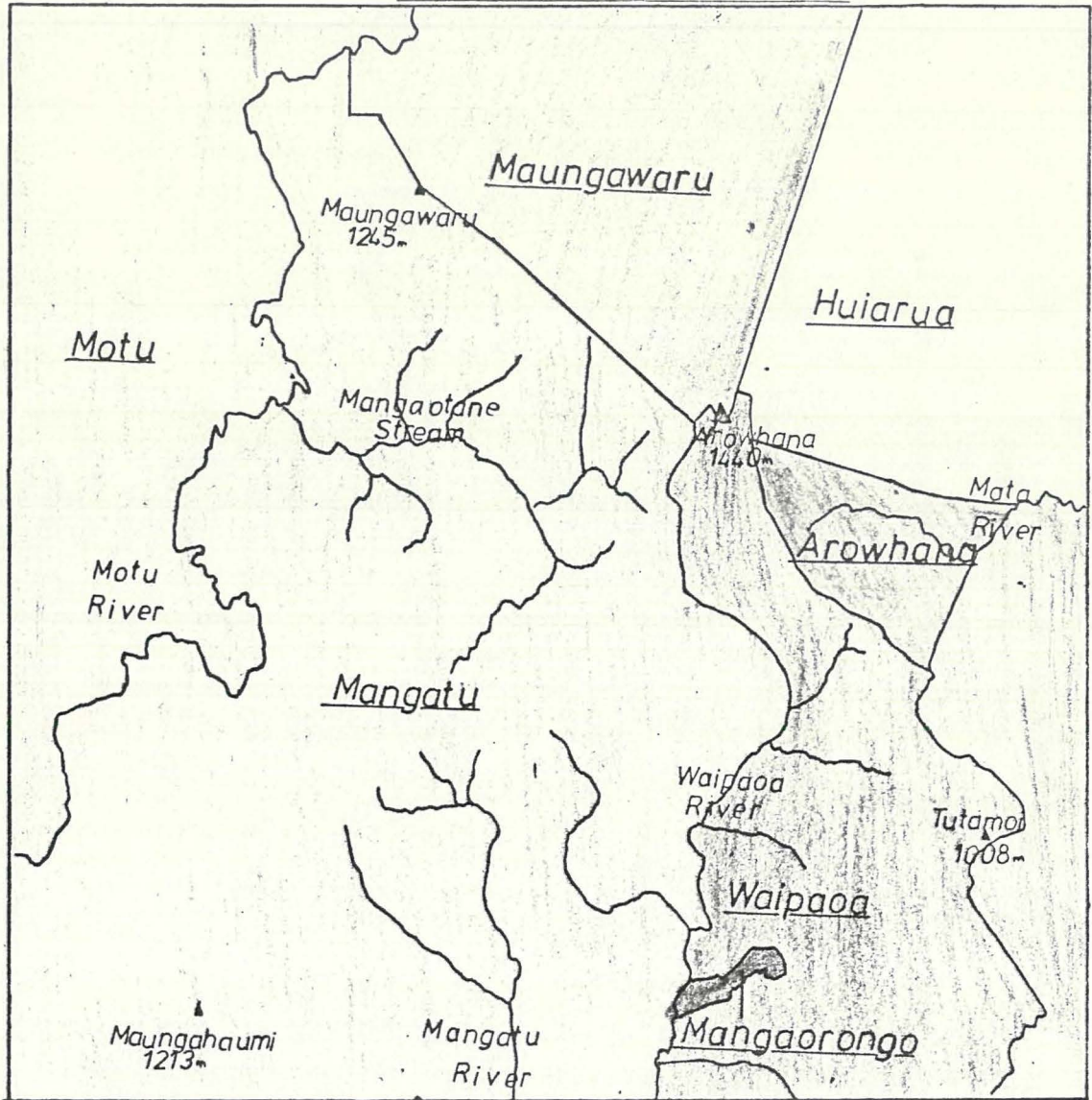


Figure 2

MAORI LAND BLOCKS.



Scale 1: 250,000

I

THE BACKGROUND TO MAORI LAND BLOCKS

The area within the Waipaoa and Mangatu catchments was originally the land of the Urewera tribes, divided into units using natural boundaries but with the passing of the Native Land Act 1862, artificial boundaries were imposed. The following Maori Land Blocks of Mangatu, Arowhana Waipaoa and Mangaorongo form the main catchment area for the Mangatu Motu, Māta and Waipaoa Rivers.

The first Native Land Act 1862 was formulated to define legal boundaries and give legal title to the Maoris. This would facilitate further sale to Europeans with consequent agricultural development. Because of the complex tribal ownership pattern the Act did not achieve its designed aim and it was not until the Native Land Act 1865 that progress on Maori freehold titles was achieved. The Native Land Court was bound by statute to record only ten or less Maori owners for any land less than 5,000 acres, in fact this was applied to land of any area. These ten owners were meant to represent the complete tribe but due to the precise interpretation of the law, these ten became the sole owners of the block and thus many were dispossessed of their land due to European laws. Amendments to the Native Land Act were passed in 1867 and 1869 to try and rectify these legal problems and many other amendments followed.

With the confusion over land ownership and legal boundaries, Europeans were taking advantage of the Maoris and obtaining title by illegal methods, W.L. Rees felt that the Maoris deserved a better system of land division, on a tribal basis rather than the typical European single ownership method. During 1878-79 talks between Rees and Maori elders were held to form land trusts with Rees as trustee for the tribe. This method of land development was agreeable to the Maoris but a decision by the Supreme Court made the action contrary to the law.

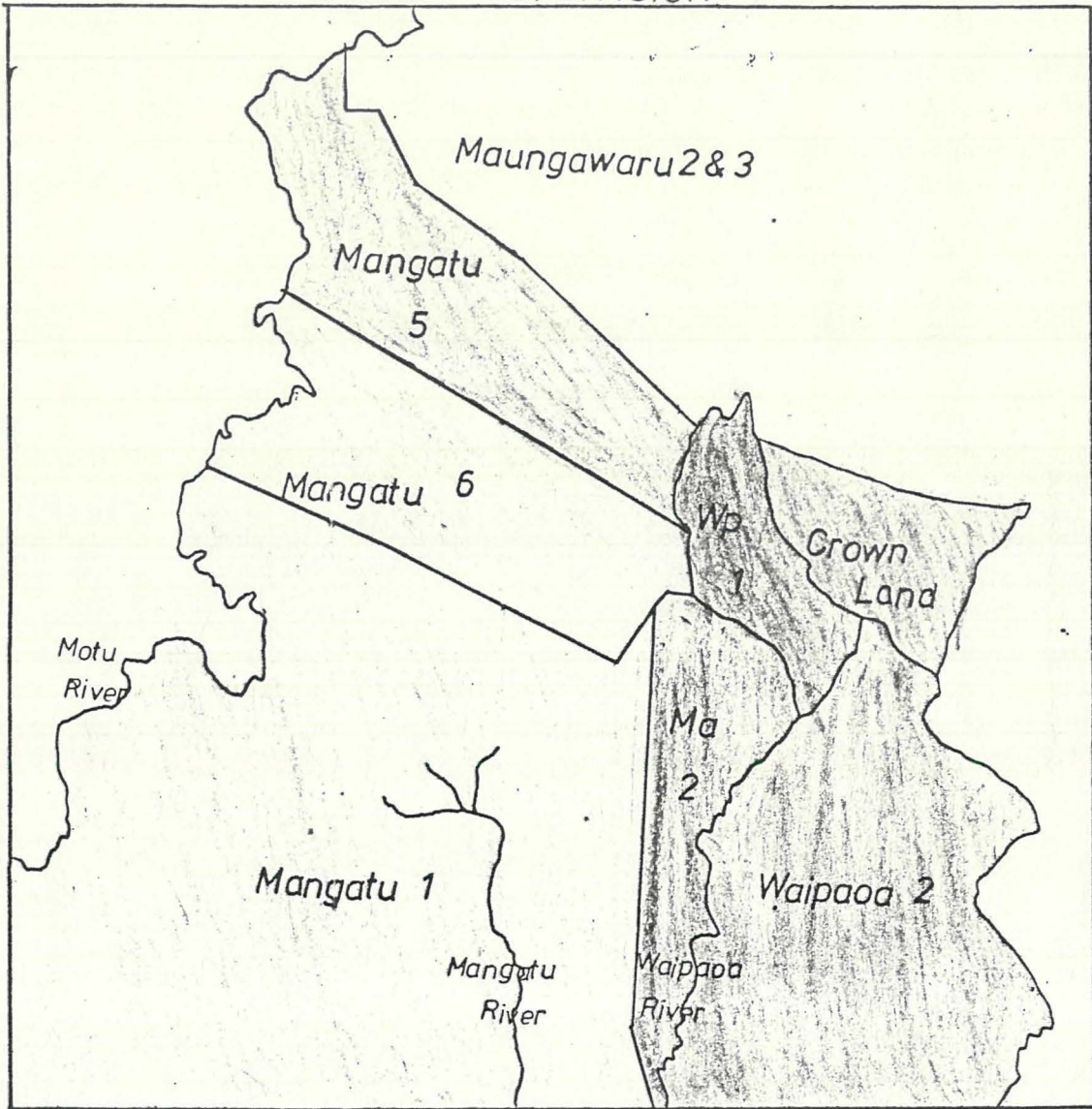
Subsequent to the passing of the Native Land Act 1880, the East Coast Native Land Settlement Company was registered the following year in July, 1881. The principal shareholders were W.L. Rees, Wiremu Pere and James Carroll. With land development expanding beyond the East Coast area the name was changed to the New Zealand Native Land Settlement Co. Ltd. in October, 1881. The land was acquired from the Maori owners partly by way of purchase, partly trust right and interests, the object being to develop the said land in perpetuity. Because of the costs involved, stocking, surveying, roading etc., and the poor market at the time, the company was soon in difficulties. There were grievances between Maori owners, Maori owners and Trustees, European owners and Trustees, this led in August 1888 to the company being dissolved and the land held in trust was transferred to Wi Pere and Sir James Carroll as Trustees. The debt of the company, £53,851 was transferred to the Trustees, as well as raising a further £40,000 mortgage from the N.Z. Estates Company, for developmental costs.

The following is a quote from the preamble of "The Native Land (Validation of Title) Act 1893".

"And whereas it would be a scandal that such a state of things should be allowed to continue to the public detriment and it is therefore expedient that a special Court should be constituted and endowed with sufficient powers and jurisdiction to deal with and finally settle all conflicting interest, disputes and claims of right and ownership in the said land transactions or out of the occupation of the said land or out of any of the wrongs and grievances hereinbefore mentioned"

Thus the Act became law and the Validation Courts were formed, equitable ownership titles were legalised as well as the settling of compensation claims.

Figure 3
BLOCK SUBDIVISION



Scale 1:250000

II.

LEASEHOLD SUBDIVISION

Title was first issued to 100,266 acres forming Mangatu No. 1 Block. There were 179 Maori owners but they unanimously elected Wi Pere and eleven others to represent them on the title, but the refusal of the Native Land Court to recognise any owners, other than those twelve on the title, led to the passing of the Mangatu No. 1 Empowering Act 1893. This was followed by the formation of the Mangatu No's 1, 3 and 4 Trust. Before any leasing of land in Mangatu 1 occurred, Wi Pere had already withdrawn 20,000 acres of the Block for his own family trust, because of debts incurred on behalf of the Trust as a whole.

Because of the debt incurred in the development of the blocks, the mortgage holder, the Bank of New Zealand, commenced proceedings to sell certain blocks through the Supreme Court. The "Trustees" sought an injunction restraining the sale. The injunction was dismissed by the Supreme Court but as a result The East Coast Native Trust Land Act 1902 was legislated on 28th August 1902 and the East Coast Native Trust Land Board was gazetted on 19th March, 1903. The debt outstanding to the BNZ from the East Coast Native Trust Land was, on 30th January, 1904, £159,029 but this was liquidated by June, 1905. Mangatu 5 and 6 Blocks became Principal Securities with the BNZ by deed of Agreement 9th April, 1904. The East Coast Native Trust Land Board was superseded by the East Coast Commission on 7th February, 1907 and a "Commissioner" was appointed by the Governor General. In 1917, as a result of continued financial problems, the Mangatu Trust Lands also came under the control of the Commissioner.

The first leasehold title on Mangatu No. 1 was issued by the Commissioner of Land for Hawkes Bay, Wi Pere M.P. and Henry Jackson - Accountant. The lease was for 21 years,

with compensation, but if the lease was renewed for a further 21 years there was no right of compensation. W.G. Foster leased Subdivision 1, 18,521 acres on 17th August, 1899. Subdivision leasing continued when William Russell Cooper leased Subdivision 7, 2,320 acres on 24th February, 1900 - Te Hua Station, the Tiffen Brothers leased Subdivision 2, 558 acres on 26th January, 1901 - Tawhiti Station, the Hegarty Brothers leased Subdivision 13, 3,900 acres on 28th January 1901 Dome Station and the Tullock Brothers leased Subdivision 15, 1,235 acres on 18th October, 1901 and Subdivision 11, 908 acres, 26th June, 1902, Mangatahu Station. In March, 1912, seven sections of land totalling 30,440 acres, in Mangatu No's 5 and 6 were offered for freeholding at a public auction, but due to the lack of easy access, F.W. Williams was the only buyer at £1 an acre. The other sections were withdrawn but were offered again in the following year. W.D. Lysnar bought 4,790 acres at £1.6.6d an acre forming Mangaotane Station. The remainder of the two Blocks was retained by the BNZ as securities for mortgages from the East Coast Commission. The debt outstanding on Mangatu 5 and 6 before freeholding, was £16,519.18.2d on 10th September, 1908.

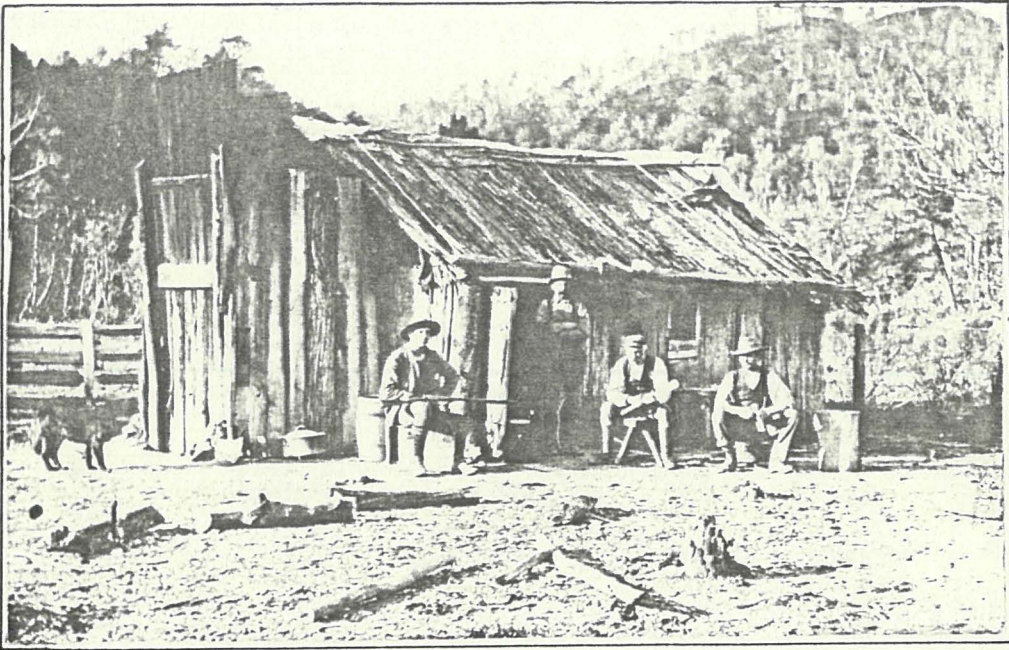
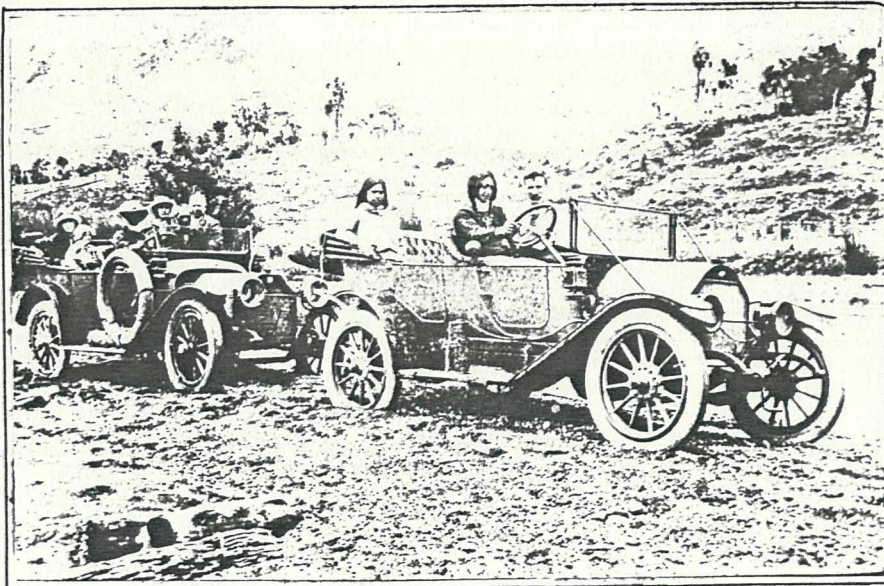


PLATE 1

1. The original Mangatahu whare, circa 1903, a typical split totara structure of the early settlers. The following men are, from left to right, R.E. Barton, L.B. Tullock, J.F. Rutledge (lessee Wairere Station, Sub 10) and H.R. Tullock. The whare was on the upstream side of the junction of the Mangatu River and Mangatahu Stream, view looking up the Mangatahu Stream.

2. H.R. Tullock with his 1910 Model 45 Overland and L.B. Tullock with his 1911 Buick in the Mangatu River, circa 1915. Travelling upstream from Whatatutu, the vehicles were always parked at Wairere Station and a buggy used to get the additional distance to Mangatahu Station. The Maori family is part of a Urewera shearing gang. The terraces in the background are now largely buried.

Photos. Mrs. L. Maclean.



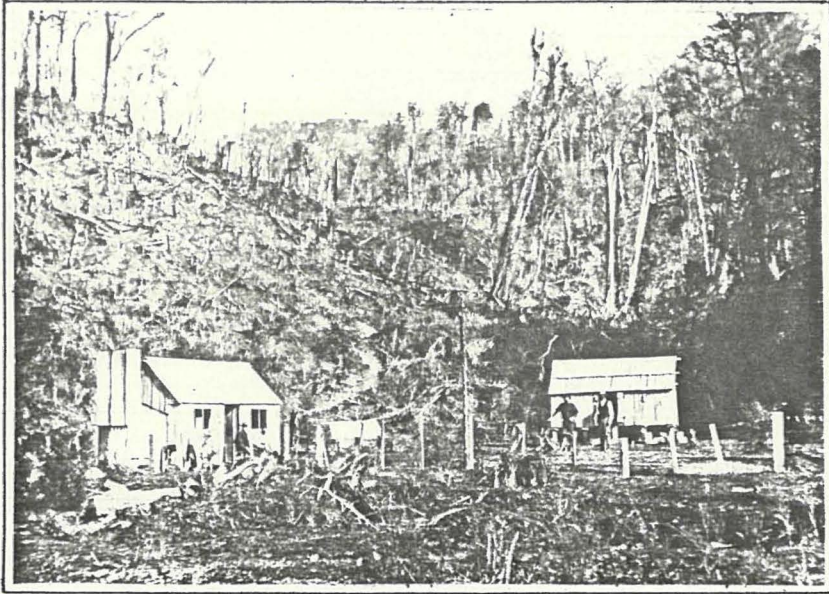


PLATE 2.

The original Dome Station whare location, circa 1903 and 1976. View looking west across the Mangatu River. Visible in the early photo is a telephone post.

Photo. Mr. W. Hegarty.

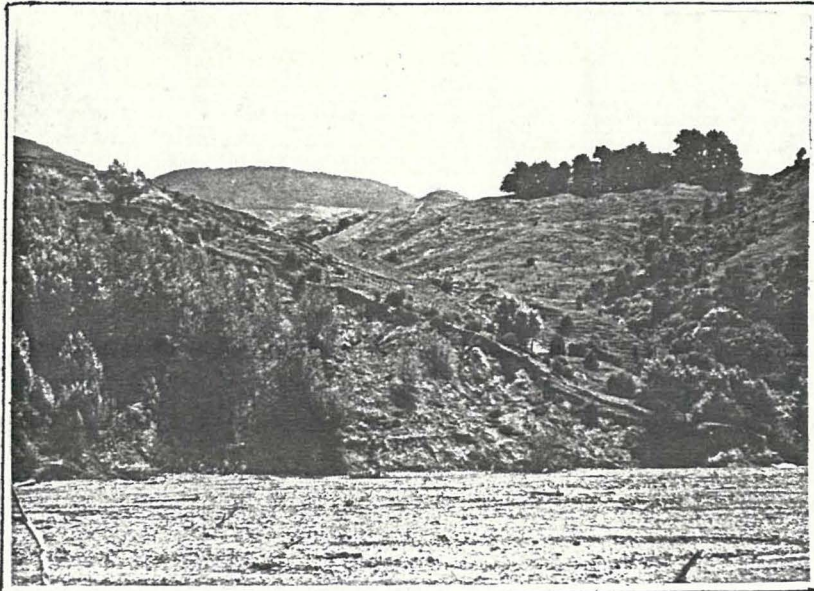


Photo R.D. Black

III.

LAND DEVELOPMENT IN THE MANGATU CATCHMENT

Clearance of the indigenous forest cover proceeded fairly quickly. For instance, by late 1903 W.R. Cooper, whose land now totalled 8,000 acres, had 6,000 acres cleared and in grass. This was supporting 9,000 Lincoln-Romney cross sheep and 700 Hereford cattle. The initial growth of native and mixed English grasses was very good but this did not continue. Turnips were often sown with grass in the burnt over bush to provide an alternative stock feed. On Dome Station, 700 acres were sufficient to fatten 4,000 ewes. The stocking varied from five to the acre after lambing, to one to the acre during winter, but three sheep per acre or one cattle beast to five acres was the norm. All shearing was done by Maoris. Local Maoris from Whatatutu carried out the shearing at Tarndale and Te Waka Stations while others would ride and walk over from Ruatahuna and Te Whaiti for shearing at the other stations.

By 1914, most of the leasehold land had been cleared but in this relatively short period of time the Mangatu River was already showing the effects of increased run-off. Originally, all the homesteads and woolsheds were on the riverbank, but the obvious encroachment by the river onto the terraces caused remedial flood protection measures to be implemented. Both the Tullock and Hegarty brothers built log and wire groins along the riverbank near their woolsheds while further downstream at Te Hua, Sydney Paviour planted basket willows around his woolshed. Unfortunately, neither measure was successful and the Mangatahu shed became unusable. Shearing was then carried out in the Dome woolshed until it, in turn, was swamped and rebuilt on the opposite side of the Mangatu River. All the homesteads have been moved at least once and some twice in order to ensure that the buildings remained beyond the effect of the river.

Communications have always been rather tenuous in the Mangatu and Waipaoa catchments because the river beds, being the only logical means of access, are so unstable. Horse drawn wagons were the only means of freight transport. Waipaoa Station had their own wagons and teams, while the other stations used the carrying services of Jack Ray and later the King brothers, in Whatatutu. A five horse mail coach went from Whatatutu to Arowhana every Tuesday, staying the night, returning Wednesday, while a smaller coach went from Whatatutu to the Iwiroa Post Office every Thursday. Wool was hauled downstream on wagons, 20-24 bales at a time. This was transhipped onto larger wagons at Whatatutu and taken to the railhead at Puha. This haulage between Whatatutu was later handled by solid tyred Leyland and Thornycroft trucks starting about 1924. The first pneumatic tyred trucks to carry wool down river from the stations were "Whites" and "REO's", in 1931. Access up the Mangatu River beyond Dome was difficult and often large greensand boulders had to be blown clear with explosives. During the Depression years Armstrong Road and the Tarndale Road were completed using "Dolies" as the labour force. By 1936 the road had reached the Tarndale - Te Rata boundary and by 1938 it was through to Wairangi. Before the road was built, however, all bulk supplies would be freighted up river in the early Autumn and then packed on horses to the more inaccessible homesteads. A very early feature of the area was the telephone connection to Gisborne. The line was completed up the Waipaoa River to Arowhana in 1901 and along the full length of the Mangatu River in 1903.

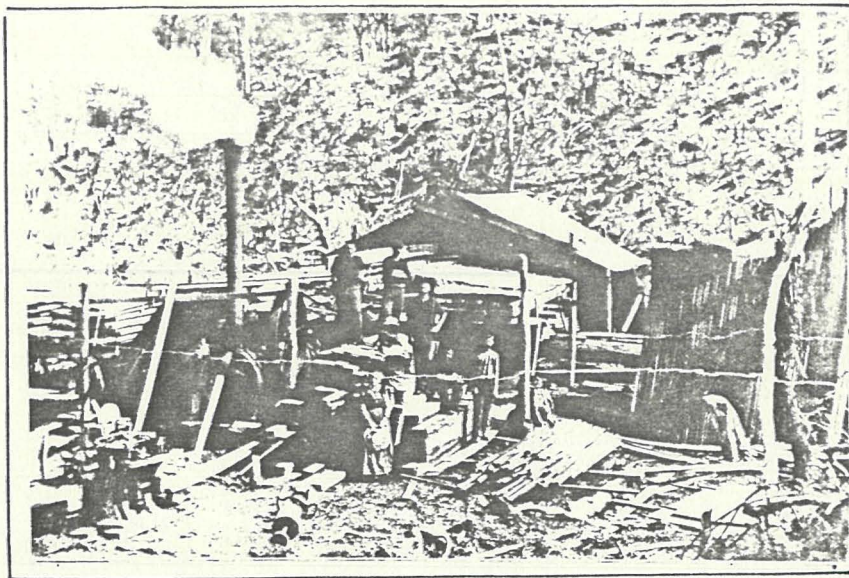


PLATE 3.

1. Roke Brothers, travelling sawmill, circa 1903. This was situated about 1 km. upstream from the Mangatahu Homestead. It operated as a small unit producing sawn timber for local consumption until 1910.

2. Bushman on J.S. Barton's property of Iwiroa, circa 1903. This indicates the size of some of the largest timber found in the Mangatu area.

Photos. Auckland Weekly News.



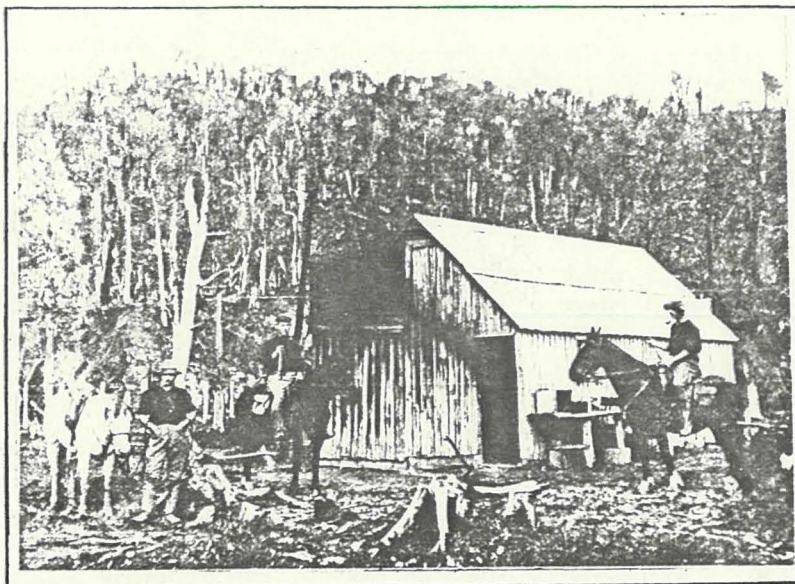


PLATE 4.

1. Iwiroa whare, circa 1903. The view looking East from the Mangatu River toward Te Iwiroa. J.S. Barton on the left and his brother R.E. Barton on the right.

2. A similar view to above but looking more S.W. The terrace in the original picture is the same as that in the left of the new photo. There are several old Pine trees on the remnant terrace. The drainage from Te Iwiroa ran South into the Mangatu River, but with the volume of debris in the stream channel, a secondary course now flows West across the former homestead and Iwiroa Post Office terrace.

Photo. Auckland Weekly News

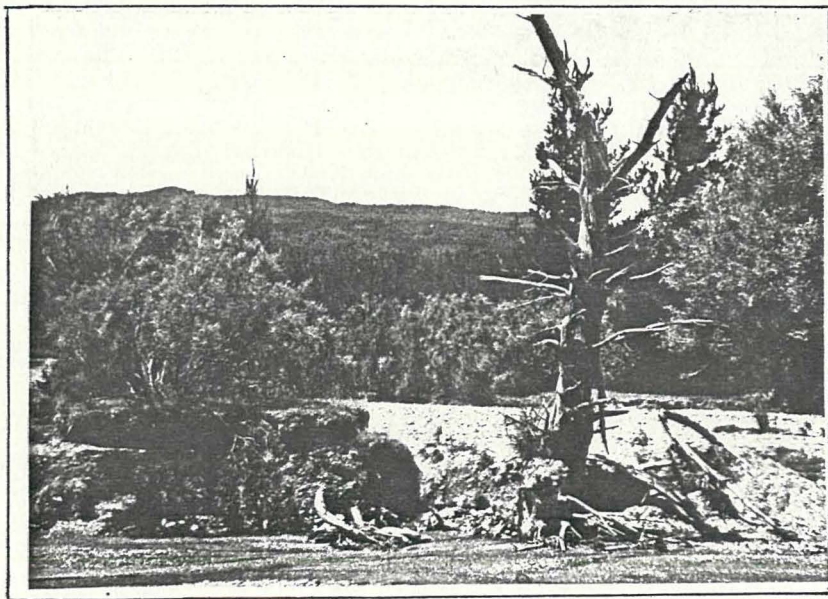


Photo R.D. Black

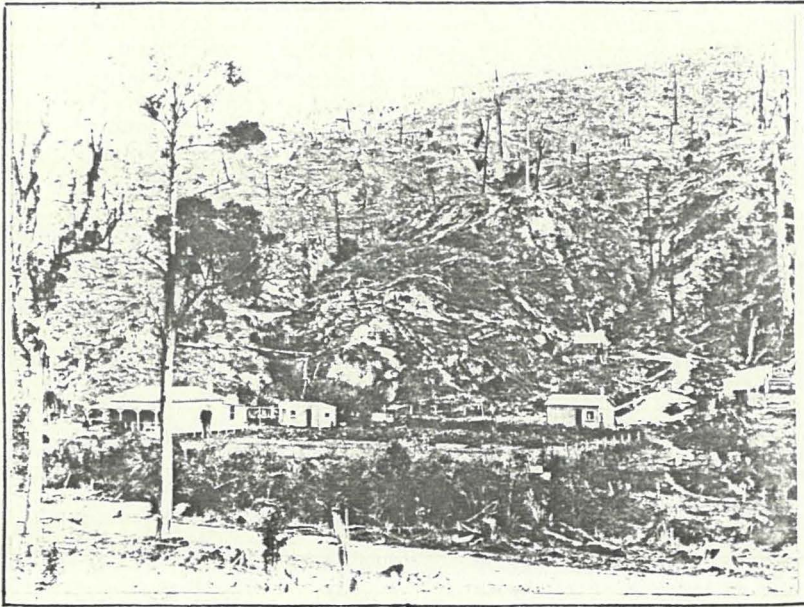


PLATE 5.

Dome Station, circa 1910 and 1976. The view is looking West and downstream across the Mangatu River. The river is flowing from right to left in the narrow channel at the bottom of the old photo. The aggradation of the stream-bed is 10-15m.

Photo. Mr. W. Hegarty.

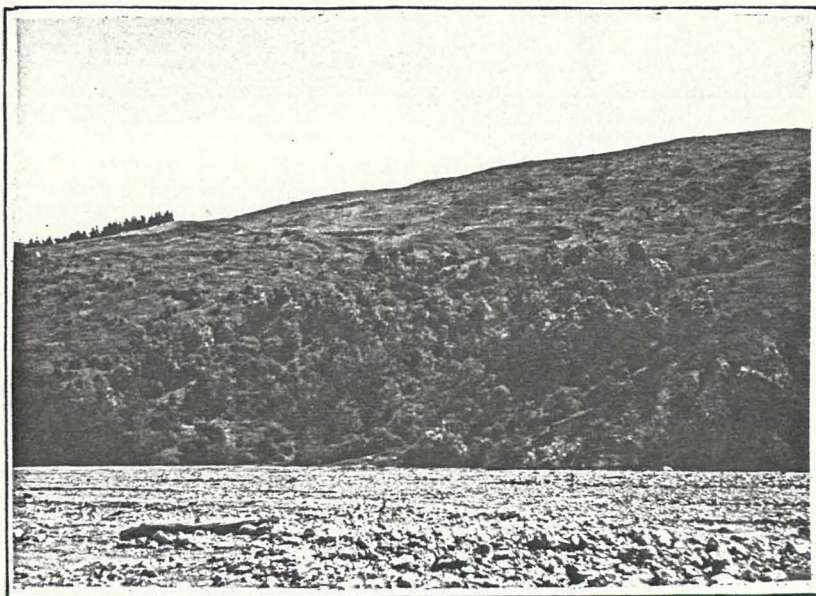


Photo R.D. Black

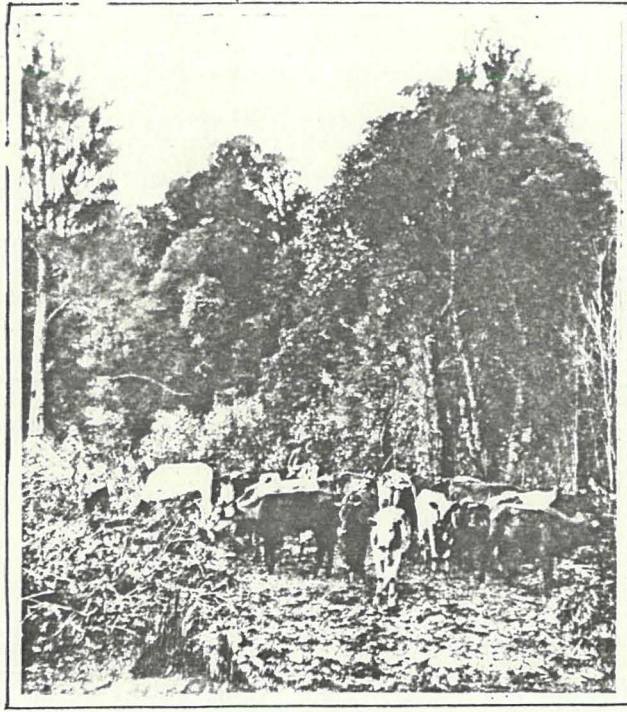
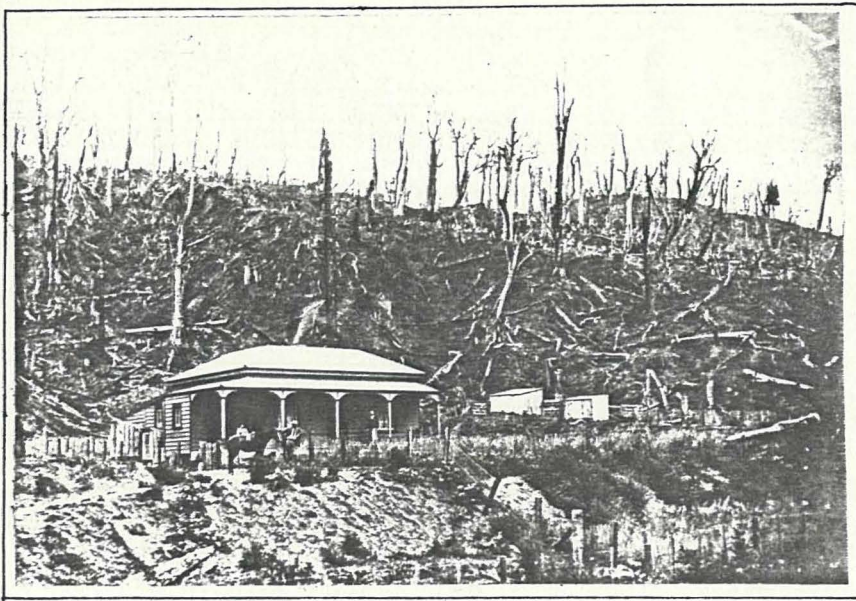


PLATE 6.

1. Cattle being mustered on Iwiroa by J.S. Barton, circa 1903. A typical group of mixed breed cattle used in the early development years.

2. Dome Homestead, circa 1920. This view of the house is after the second move up beyond the effects of the river. The typical appearance of the hillside post clearance, the burn having occurred 10-15 years previous.

Photos. Auckland Weekly News
Mr. W. Hegarty.



IV.

THE EFFECT OF THE DEPRESSION

"All through the Mangatu district the land appears to be of excellent quality. It has taken grass very well indeed and there is no doubt the settlers will reap a rich, well deserved reward for the enterprise they have displayed".

This hopeful quote from the Auckland Weekly News, November 1903, did not come to fruition. In 1921, 1925 and 1932 when rental prospects were low and leases fell due for renewal, most of the current owners elected to take compensation which, in most cases, was £2.10.0d an acre but went up to £3.5.0d an acre if roading or any other improvements had been made.

Because of the continued deterioration of pasture, regeneration of scrub, poor markets etc., there was no likelihood of any continued economic farming operation. Mangatahu Station and Wairere Station were the first to revert to the East Coast Commission in 1922 and 1924 respectively. Others continued into their second term before termination; Tarndale 1937, Te Waka 1937, Te Hua 1942, Dome 1943. Because of the terms of the lease most lessees received no compensation at all, but £3,085 was paid as compensation for Tarndale Station in 1937. In 1932 the expired leases of F.W. Williams (Te Rata) and H.M. Bayly (Tarndale) were only renewed after the second auction, at unreserved rental. Again there were no other interested parties. Williams renewed his lease, the rental dropping from £52 to £25 p.a. for 7 years, £37.10.0d for 7 years and £50 for 7 years. Mrs. Bayly renewed her lease for £1 p.a. for 2,290 acres. When the mortgages were due on their subdivisions in Mangatu 5 and 6, F.W. Williams was able to clear his debt, but W.D. Lysnar, whose debt to the East Coast Commission was £18,630, was unable to settle. His land was bought back by the Commissioner, by action through the Registrar of the Supreme Court in March, 1931. This initiated a private legal action of Lysnar versus the National Bank, which he later won.

From the report of the East Coast Native Trust Land Board, 1934, it was suggested that "Maungawaru and Mangatu 5 and 6 should be offered to the Forestry Department".

These blocks in the heart of the Raukumara Range were so remote before the construction of the Tarndale Road, that any form of agricultural venture was and is still economically impossible. Freehold sections in Mangatu No's 5 and 6, where clearance burns during the period 1911-15 became uncontrollable and produced areas too large to maintain a reasonable pasture, have now largely reverted to scrub and regenerating bush.

When the debts on both Mangatu No's 5 and 6 (East Coast Native Trust Land) and Mangatu No's 1, 3 and 4 (Mangatu Trust Land) were finally cleared, the land was transferred from Trust ownership to an Incorporation in 1948.

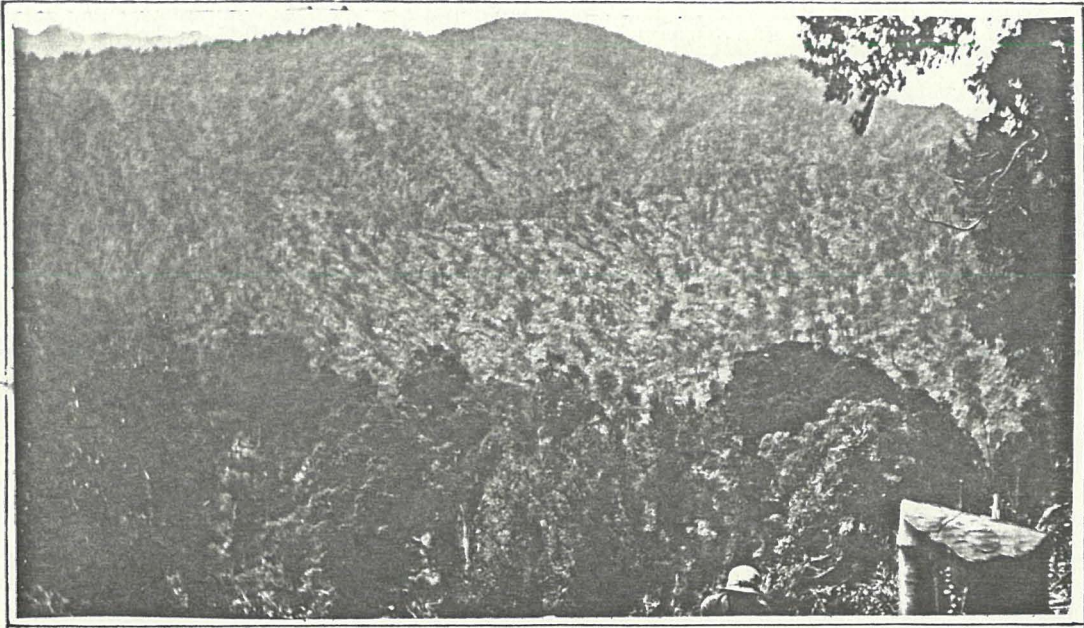
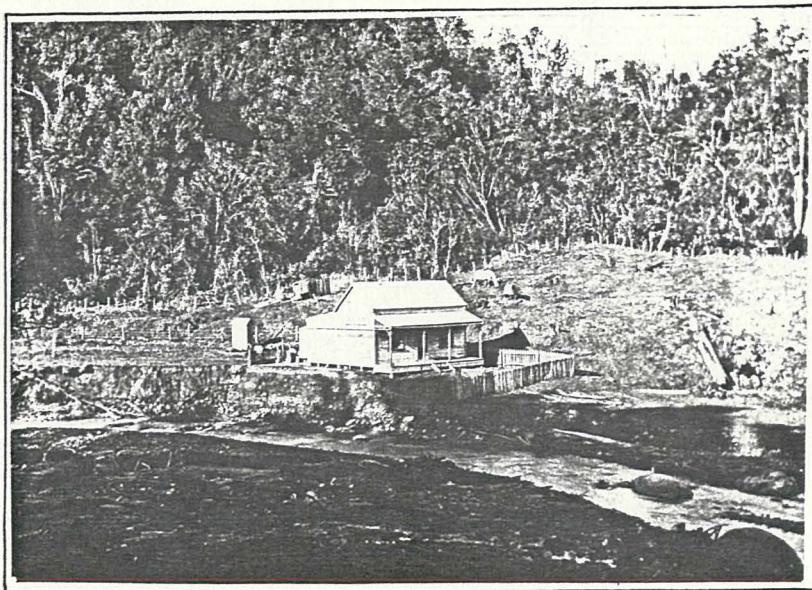


PLATE 7.

1. Typical vegetation of the upper slopes in the Mangatu and Waipaoa catchments. Part of Arowhana Station circa 1912, showing selectively cleared slopes in the middle distance, ready for burning.

2. Shepherds cottage, Arowhana Station circa 1914. The Wairangiorea Stream flowing from left to right, showing the effects of the 1914 flood on the house. In the creek are the typical round forms of Tertiary sandstone concretions.

Photo. Gisborne Museum and Art Centre.



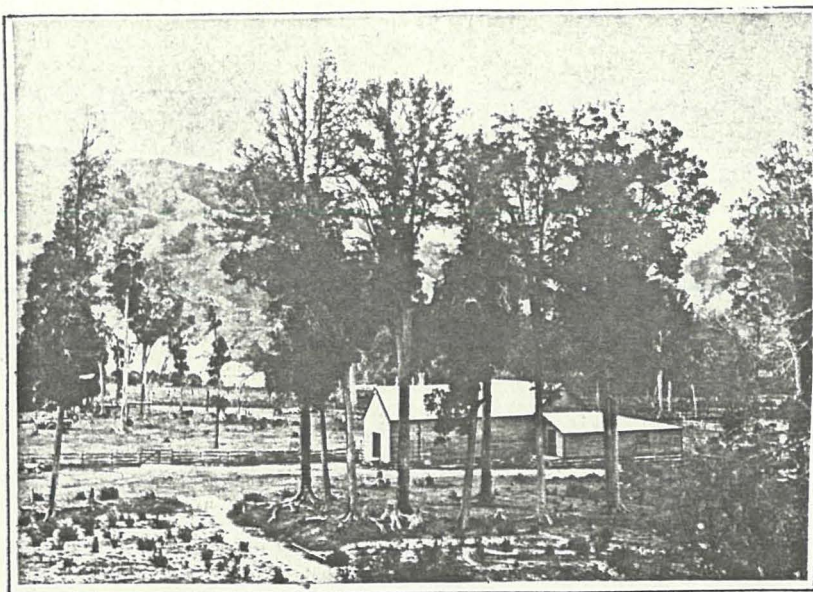


PLATE 8.

Wheturau Station, circa 1906. The property of G.W. Tiffen. The modern photograph, is taken from the site of the present Forest Headquarters. Homestead Creek has been modified during the building of the Headquarters but in the older picture it flowed between the Kahikatea and the bottom right corner of the picture. Flood deposited silt is visible in the lower part of the photo. Because of the obvious danger of flooding, the woolshed was shifted, about 1910, from this position onto the terrace now occupied by the single-men's camp.

Photo. Gisborne Museum and Art Centre.

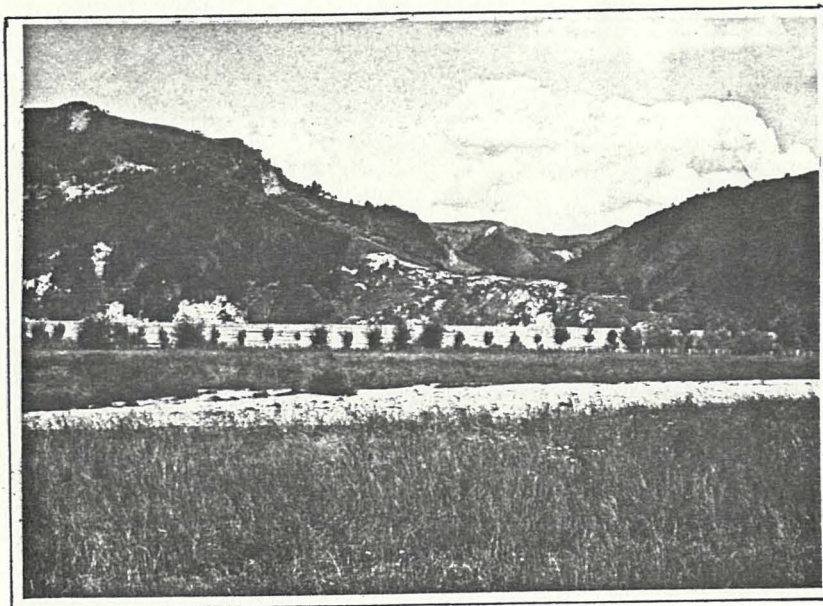


Photo R.D. Black

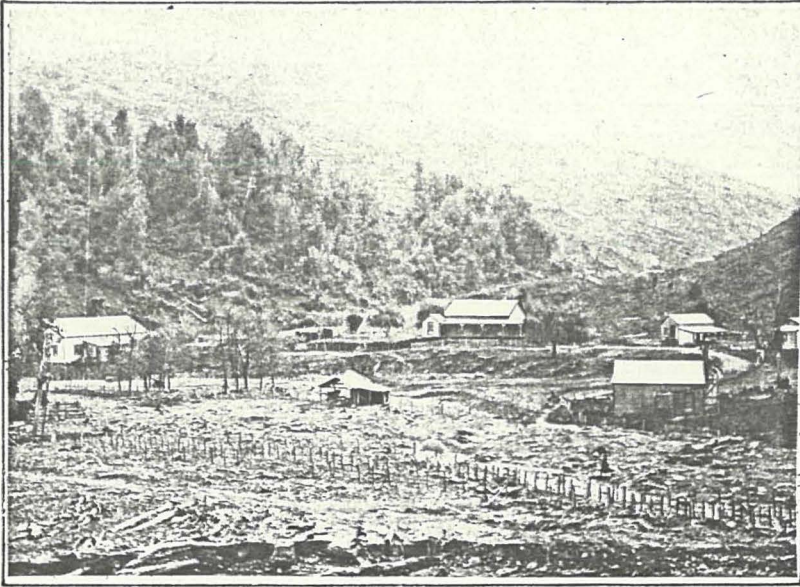


PLATE 9.

Arowhana Station, circa 1914 and 1976. The junction of the Waimatau and Wairangiara Streams, the view taken looking up the Waimatau Stream. The results of the 1914 flood are quite visible, the aggradation in the 62 years is approximately 3 m.

Photo. Gisborne Museum and Art Centre.

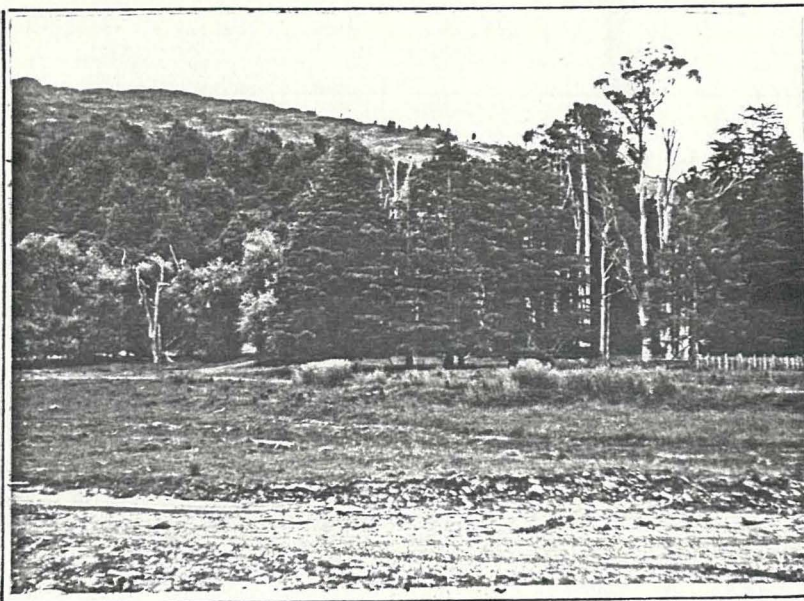


Photo R.D. Black

V.

FREEHOLD LAND SUBDIVISION

The freehold land within the Upper Waipaoa comprises Mangatu 2, Waipaoa 1 and 2 Blocks. The first European owners were a Wellington company comprising William McIntosh Muir, Robert Greenfield, James Lockie, James Stewart and William Findlay, who on the 18th July, 1882, bought Waipaoa 2 Block of 33,494 acres, 2 roods 29 perches. This area comprised all of the Mangaorongo Maori Land Block and part of the Waipaoa Block. The block was leased to George Henry Stubbs, and Washington Irving Weaver on 26th January, 1887. Bush felling contracts had already been let and on 7th February, 1200 acres were burnt. This size of single burn in a day was very typical of bush clearance at the time. Muir and Greenfield also bought Mangatu 2C2B subdivision on 28th August, 1894. By 1907, however, only 10,000 acres had been cleared and the original company sold out to John Clark on 22nd March, 1907 for £135,000. The sale included 30,000 sheep and 1,400 cattle. Bush clearance continued more vigorously with major burning off occurring between 1909 to 1919. Thirty years after John Clark purchased the station, the stock carrying figures were - 51,494 sheep and lambs and 5,672 cattle.

Some paddocks, however, were already showing severe land disturbance when initially cleared in 1908. The Bottom Wether Run, in the Whakauaponga catchment is an example, where instability was widespread when the first aerial photography was completed in the Upper Waipaoa Catchment in June, 1939.

Mangatu 2 Block was first subdivided on 19th March, 1888, when G.H. Stubbs bought Mangatu 2A subdivision comprising 1,832 acres. He did not retain this long however and on 5th August, 1891 Frederick John Tiffen purchased the block.

F.J. Tiffen and his sons George William, Henry Ernest, Frank Louis and Frederick Ansell came from Patangata, Central Hawkes Bay, where they owned "Homewood". F.J. Tiffen first came to Poverty Bay in 1885 and on March 23rd he rode up

to Waipaoa Station with G.H. Stubbs for the purpose of looking over land with the prospects of buying some. He later bought Puhatikotiko. After the purchase of Mangatu 2A, G.W. Tiffen moved onto the property and H.E. Tiffen remained as manager on Puhatikotiko. Lincoln sheep were introduced and by 8th December, 1894 the Tawhiti woolshed was built. On 29th December of the same year the first load of wool was hauled downstream on wagons. Since his initial purchase, F.J. Tiffen had, with his eldest son G.W. Tiffen, bought all of the remaining subdivisions in Mangatu 2 Block by October, 1895. G.W. Tiffen had also bought 6,695 acres (Waipaoa 1B, 1C, 1D Blocks) on 16th May, 1894. During all the land purchases, W.D. Lysnar had been the legal advisor and also son-in-law of F.J. Tiffen, having married Ida E. Tiffen in 1893. In September, 1897 G.W. Tiffen sold Waipaoa 1B, 1C, 1D Blocks and in 1899 parts of his Mangatu 2 subdivisions in the Waimatau catchment to W.D. Lysnar to form Arowhana Station.

At the time, W.D. Lysnar owned Makarori and had a share in Whakaroa while he and his family lived at Makarori. His brother Harold moved to Arowhana, but he was later succeeded in 1902 by the first manager Jim Neilson. The original draft of sheep was taken upstream soon after the land transfer in 1897 but with only 400 acres cleared the stocking rate was much too high and a great number of sheep died in the bush or wandered onto Waipaoa Station. By April, 1898 there were three buildings on the station, a storehouse, a mens whare and a cookhouse. Bush clearance was proceeding at an increasing rate. 700 acres were cleared in 1898 and a contract for felling 1,000 acres of No's 1, 2 and 3 paddocks up to the source of Woolshed Creek (Waimatau) below Kereruhuahua, was let at 18/- an acre. Fencing by contract was being carried out by Joe Lawson and Tom Lucas who lived in a whare directly across Woolshed Creek in the bush reserve. In 1898 they completed the boundary fence of the 600 paddock which was the largest on Arowhana and extended from Kereruhuahua down-slope to the 600 Creek (Wairangiora).

In June 1898 a second draft of 1500 sheep were gathered together from Makarori, Whakaroa and the Matawhero saleyards

(at 5/- a head) and driven up to Arowhana. Because of the condition of the river it took two weeks to complete the journey. However, the first draft of fat bullocks from Arowhana Station to the Kaiti works, took only three days driving. By late 1898 the Waipaoa River valley was cleared of bush to within 6 miles of Arowhana. The only land cleared on Arowhana was the triangle between Woolshed and 600 Creeks up to the ridge boundary fence of Spear Flat and 600 paddock, just below Kereruhuahua.

Early in 1899 several deaths amongst lambs were found to be due to wild dogs. "Dick" Fountain shot the first dog on the property and earned £3 because there was a bounty of £5 for bitches, £3 for dogs and 30/- for puppies. After several months the problem was finally settled. A 14 - stand woolshed, a Smithy and Mark Benson's whare were built in 1899. The timber was milled using a pit-saw operated by the two Roke brothers and Jack Rudd. (see Plate 3). The pit-saw was downstream at Te Rata. The sawn timber was hauled back to the homestead site by Mark Benson's bullock team where the Roke brothers and Rudd built the house. When the house was completed Harold Lysnar's hut was attached to the verandah. (appendix 1).

Until Autumn 1901 there were very few cattle on Arowhana a few bullocks and some milkers that were kept in the 600 and Cocksfoot paddocks. W.D. Lysnar sent a half-caste Maori named Hays up the East Coast to buy some cheap cattle from the Maoris. The purchased cattle were a very mixed breed indeed and didn't survive in the wet bush conditions. Mr. John Clark's valuation report on 21st June, 1901 indicated that 2,950 acres had been cleared and the mixed English - Native pasture with turnips was of excellent condition because of the good sandy loam soil. The land was carrying 7,000 sheep and 225 cattle but he thought that 2 sheep per acre and 70 cattle per 1,000 acre was an optimum carrying capacity. Already the instability of the land was in evidence with the "hill slip" behind the homestead and the problems of keeping the Kereruhuahua ridge track open

and the problems of holding a straight fence-line on the 600 boundary fence.

"London Colonial Sale of 1901, wool 4d a pound", a quote from the diary of F.J. Tiffen. By 1901 the Tiffen brothers had arranged themselves along the length of the Waipaoa River, F.A. Tiffen at Puhatikotiko, G.W. Tiffen at Wheturau, H.E. Tiffen at Tawhiti, and F.L. Tiffen at Te Rata, with H. Lysnar at Arowhana. On 15th September 1905, F.L. Tiffen sold his property of 2,116 acres 1 rood 20 perches in the Tikihore catchment to H.E. Tiffen for £5 an acre. The sale included the lease of 658 acres in Mangatu 1. G.W. Tiffen also sold H.E. Tiffen part of Mangatu 2A on 10th October, 1907 while F.L. Tiffen sold parts of Mangatu 2G, 2E, 2D subdivisions to H.E. Tiffen on 20th November, 1906. By late 1907 the rearrangement and final boundaries of the three Tiffen properties of Wheturau, Tawhiti, and Te Rata had been completed, later to be purchased by the Crown for the purpose of State Forest.

Due to the heavy rainfall of 17th July, 1906 (4.26" rain fell in Whatatutu), associated with a heavy snowfall, a landslide demolished the Te Rata homestead of F.A. Tiffen. The only casualty was Mrs. Merritt, whose leg was badly injured. By the time Dr. C.F. Scott had travelled from Gisborne to Whatatutu by buggy and on horseback up the Waipaoa River, the leg had to be amputated. This was done at Arowhana Homestead. The Tiffen family started to leave the area when F.A. Tiffen, who had taken over from F.L. Tiffen in 1905, sold Te Rata to F.W. Williams on 22nd December, 1906. Williams also bought Puhatikotiko from F.J. Tiffen at the same time. H.E. Tiffen sold Tawhiti Station, which now comprised 2,189 acres 2 roods 15 perches, to the Fitzgerald brothers on 16th March, 1910. At this time the land was carrying 1,000 Lincoln-Romney cross sheep and 800 cattle, the only uncleared land being the leasehold block from the ridge of Tawhitiapaka to the Tikihore stream. G.W. Tiffen sold Wheturau to the Fitzgerald Brothers on 17th March, 1919, when it was carrying

1800 Lincoln - Romney sheep and 1000 cattle. The instability of Homestead Creek had already become apparent to G.W. Tiffen by the early 1900's because the original Wheturau woolshed which was originally on the Northern side of the stream had been removed and replaced on the terrace where the current NZFS single men's camp is today.

The first grazing lease was issued to Geoffrey Shore Wilson on 19th March, 1917. This land comprising the block of land between Waipaoa 1B, 1C Blocks and Waipaoa 2 Block was fairly inaccessible, being at the very head of the Waipaoa River. On 17th April, 1924 two of the Fitzgerald Brothers, Harold and Frank bought Wairangi Station from Wilson. They remained owners of Wairangi and also Tawhiti and Wheturau until Fletcher Timber Co. bought Wairangi and the Crown purchased the other stations for State Forest.

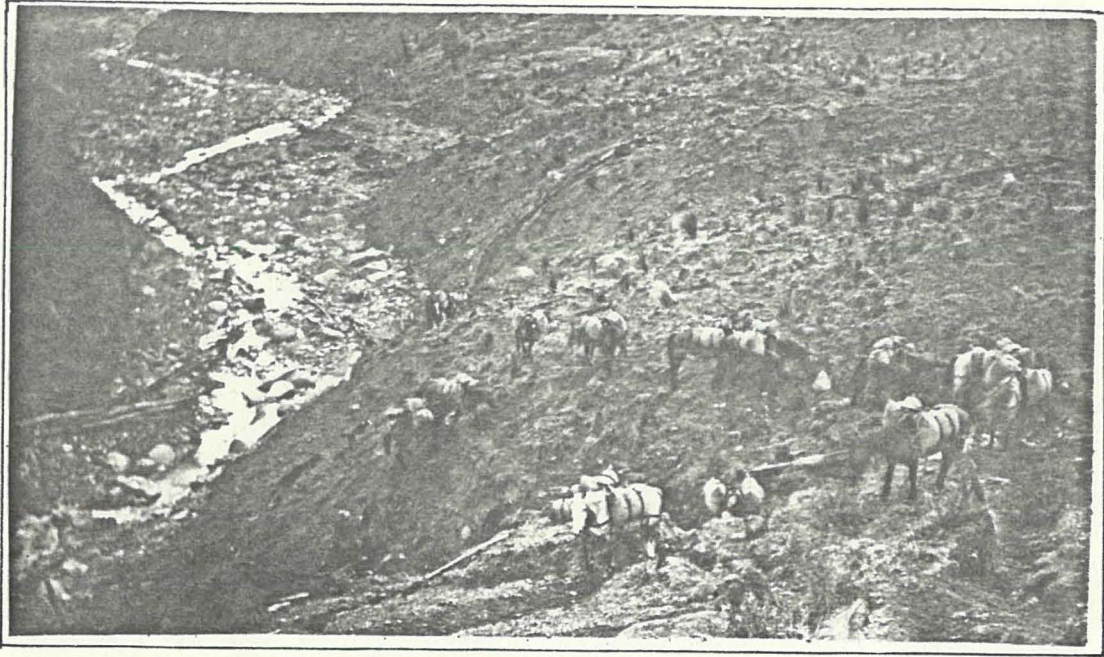


PLATE 10.

Waimatau Stream, circa 1912 and 1976. Pack horses with loads of grass-seed being taken from Arowhana into the Mangaotane catchment where large burns had only just been completed.

Photo. Gisborne Museum and Art Centre.

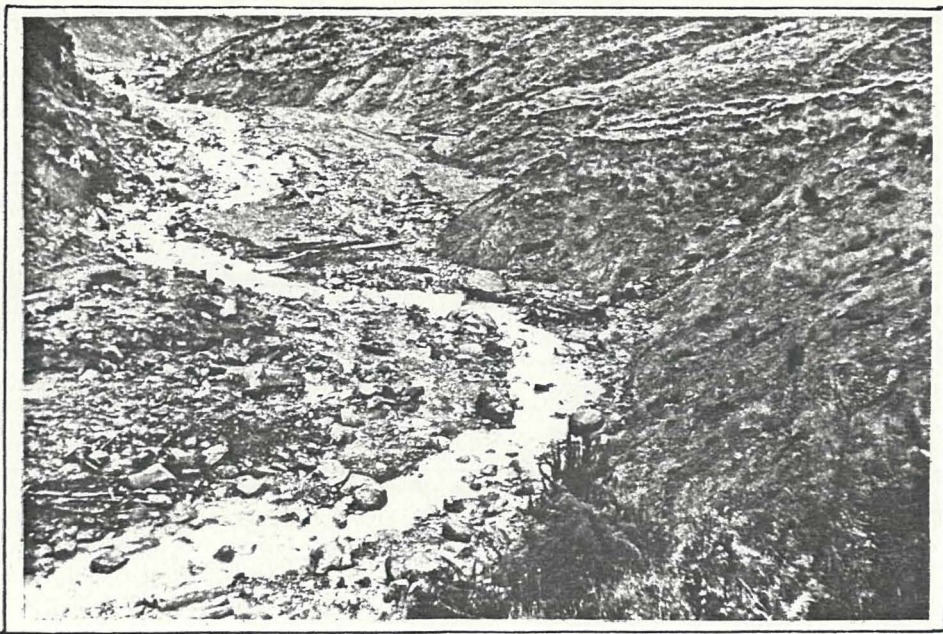


Photo R.D. Black

VI

EXPLANATION OF THE LAND ACQUISITION MAP.

The map is divided into the leasehold land of Mangatu No. 1 Block to the West and the freehold land comprising Mangatu No. 2 Block and Waipaoa No's 1 and 2 Blocks to the East.

The names and dates within each subdivision indicate the original owners or lessees and the date of registration of the Land Transfer at the Lands and Deeds office, Gisborne. One subdivision, Mangatu 2, Sub O has no owner or date of transfer marked. It was purchased on behalf of Mrs. Ida E. Lysnar from the four Maori owners, on 14th March, 1899. The purchase price for the 61 acres was £10. No land title certificate was ever issued however but the area remained as part of Arowhana Station until it was transferred to the Crown.

Subdivisions purchased by F.J. Tiffen were owned by his various sons who rearranged boundaries to form their respective stations into more compact units.

The leasing of land in Mangatu 1 Blk, began later than the freeholding of the neighbouring land because of the large debt on the land with mortgages to firms such as Williams and Kettle, Dalgety's and the banks. There were many changes in the early years because of the continued financial problems. Lease transferral and sub-leasing was very common. J.T. Partridge, (brother-in-law to Carl Norris, who was the first manager of Dome Station), transferred 3,029 acres to J.S. Barton and 1,479 acres to R.E. Barton on 25th February, 1904; this became Iwiroa. The homestead was also the location of the Iwiroa P.O. situated upstream of the mouth of the Tehenui stream.

On 21st March, 1912 Iwiroa was taken over by Te Hua Station, W.R. Cooper having died on 6th May, 1905. Frank Pattullo died 7th March, 1918, the trustees of the estate being the Sherratt brothers who then amalgamated the areas of Te Waka

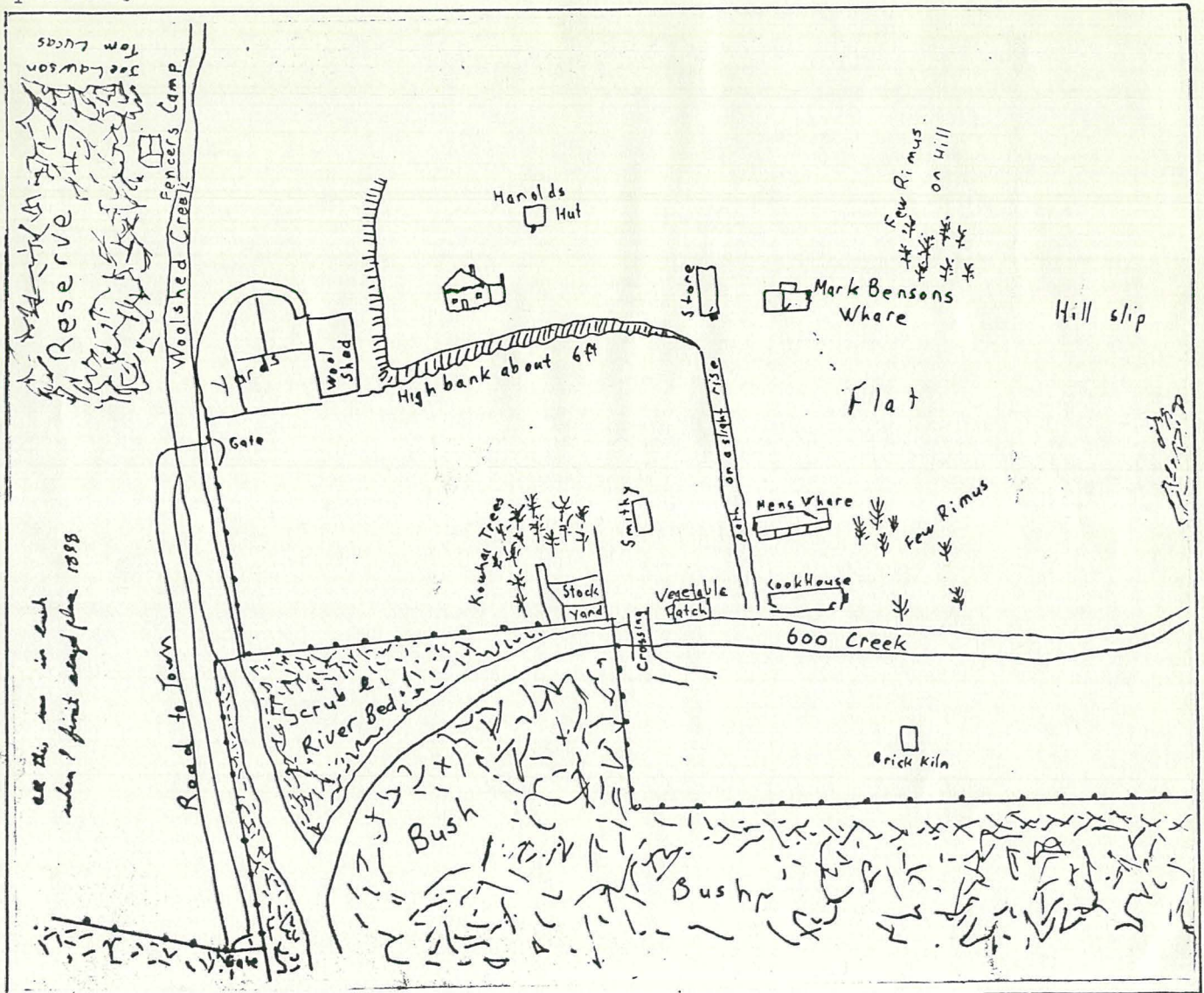
and Tarndale. Tarndale was finally surrendered to the E.C.C. as part of A.W. McIntosh's bankruptcy settlement.

The other lessees remained as marked on the map until the land passed back to the East Coast Commission.

A subdivision outside of the Forest boundary, that is mentioned for completeness, is subdivision 10 or Wairere Station as it is better known. Comprising an area of 9,804 acres, it is bounded on the North by Sub 11 of Mangatahu Station and to the East by the Mangatu River. It was originally leased by T.F. Rutledge, 1st June, 1903 but the lease was transferred to H.D. Buchanan on 22nd February, 1906. He died in February 1916 and the property passed to the E.C.C. in 1924.

APPENDIX 1.

This map has been reproduced from an original drawing of Mr. Kenneth Howell Fountain, ^{who was called Dick while working in Arowhana} which is held in the Gisborne Museum. He worked as an 18 year old "billy boy" on Makarori, and in 1899 he moved as a permanent hand to Arowhana working as a stockman until 1902 when he went away to Dental School, ^{Auckland} finishing as a Dental Surgeon in Christchurch. The map was originally drawn in a letter to Miss Winifred Lysnar in 1944 and represents the station layout in 1902. This is the earliest known layout plan of Arowhana. The brick kiln location is near the cottage in (Plate 7;2.) and the 600 creek had by 1901 taken the bank and all trace of the kiln away. The "hill slip" mentioned, is recorded in photographs, Gage and Black 1976 showing the progression downslope over a 60 year period.



APPENDIX 2.TE KUMI STORY

"In the winter of 1898 the bush was being fallen all along the Western side of Kereruhuahua ridge and a gang of Maoris had the contract for a portion of what is now known as the Kumi paddock. In that gang were two Maoris, a deaf mute who was known as "The Dummy" and an older man known as Ngamoko. One day "The Dummy" was underscrubbing ahead of the others when he came running down to the others very exhausted and frightened and declared by signs that while he was cutting some vines a reptile of some size had come down the tree towards him. Nothing would persuade him to go back and Ngamoko who was a very intelligent fellow who generally acted as "The Dummy's" mentor and interpreter says he had no doubt that "The Dummy" had seen something (and he was over 20 miles from a pub). However all hands decided they would leave it lie for the day and left the spot to report at the Homestead. Word was phoned through to town and Mr. Lysnar and Charles Ferris set out for Arowhana with wire netting, guns and dogs. Ferris had some good setters. However they never got the Kumi."

This is a quote from the letter of K.H. Fountain to Miss Lysnar, 1944; the Kumi is also recorded in Mackay's, "Historic Poverty Bay". This huge reptile was thought to live in Kumi Cove at the top of Spear Flat and Kumi paddock (Plate 11). No other trace of the animal was ever found and now the possible hoax is barely a memory.

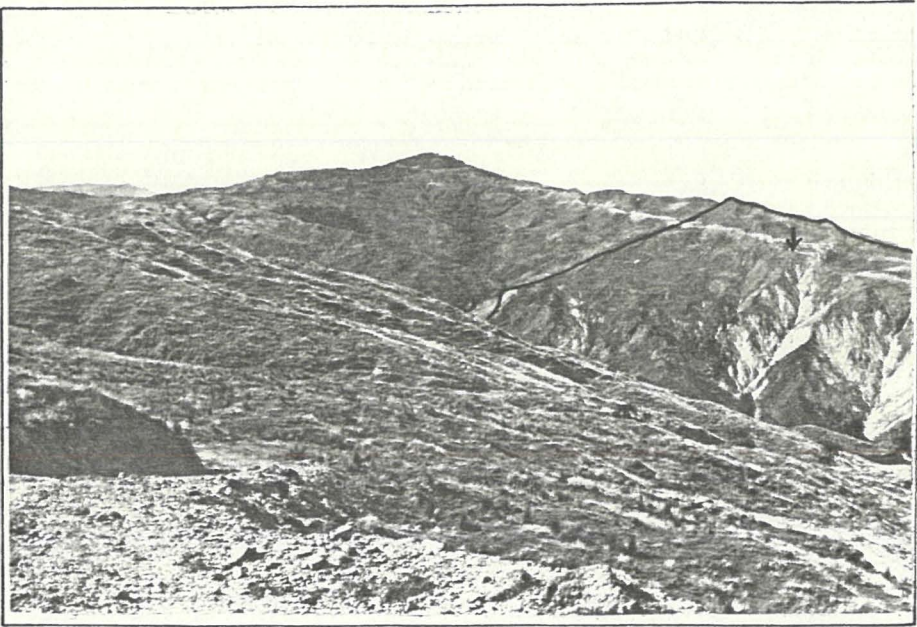


PLATE 11.

View looking North from old Te Rata track to Kereruhuahua. The Kumi paddock is indicated by the ink-line and Kumi Cove is indicated by the arrow at the gully-head. Most of Kumi Cove has been destroyed by the headward erosion of this active gully.

Photo R.D.B.

REFERENCES

- East Coast Commission - Transactions. 1894 - 1934(unpub)*
- East Coast Maori Trust Lands - Memorandum. Early History of the Trust Land 1950 (unpub)*
- East Coast Native Trust Land - Accounts 1904 -1943 (unpub)*
- East Coast Native Trust Land and Mangatu Nos.1, 3 and 4 - Accounts 1920 - 1944 (unpub)*
- East Coast Native Land Trust - Memorandum.(Commission on Native Affairs) 1934 (unpub)*
-
- Adams J.H. - Geology of the Whatatutu Subdivision Bull.9 1910
- Gage M. and Black R.D. - Geological and Slope stability investigations at Mangatu Forest, F.R.I. Report 1976 (unpub)
- Mackay J.A. - Historic Poverty Bay. 1949
- Murton B.J. - Settlement in Poverty Bay 1868 - 1889. A Study in Historical Geography.M.A. thesis Canterbury University 1962 (unpub)*
- Oliver W.H. and Thompson J.M. - Challenge and Response. 1971
- Tiffen F.J. - Personal Diary 1839-1911 (unpub)*
- Ward A.D. - The History of the East Coast Maori Trust. M.A. thesis, Victoria University, Wellington 1958 (unpub)
- The Auckland Weekly News, November 1903

Note: * Manuscripts held by Gisborne Museum.